

# Arden College Local Offer

<b>Name of site</b>	Arden College
<b>Address</b>	40 Derby Rd, Southport, PR9 0TZ
<b>Contact names</b>	Mark Musselle, Pat Bryce
<b>Telephone number</b>	0845 277 4679
<b>Email address</b>	education@priorygroup.com
<b>Website address</b>	www.priorygroup.com
<b>Facebook / Twitter feed</b>	Facebook.com/priorygroup, @Priorygroup

## 1. What does your service do?

Arden College is situated in the heart of Southport, a vibrant and cultured town on the west coast of Lancashire. The college makes the most of its position and much of the extended and college curriculum is located within the community and vocational settings within the region. The college is a co-educational residential and day specialist college for students aged 16-25 years with learning difficulties and disabilities and or behavioural and social difficulties. Individual college programmes of day or residential support are available as either 38 or 52 week placements for up to a three year period and are subject to regular reviews to ensure student needs are being met. The focus is to ensure that learners are prepared for independent adult life as much as is possible.

## 2. How are decisions made about who can use your service?

The college works closely with all agencies, parents and schools to ensure that assessment of need is fully carried out prior to offering a place at the college. The offer of placement is made to parents/carers and to the Local Authority. After starting at college the student will undertake a baseline assessment during the first term and at this stage any changes to support and curriculum will be discussed with both parents and Local Authorities before the implementation of any changes. There are formal reviews of progress as well as informal arrangements that keep parents informed as to progress and any emerging issues.



### 3. How will college staff support the child/young person?

Learners are also given individual support and guidance either through ongoing help from staff, or if identified as an additional need through external agencies such as community nurses, speech and language therapy, psychologist, advocacy or specified others. Expert specialist advice is sought where necessary and strategies are agreed for learners with more complex needs. The college develops individual communication strategies for learners to ensure that they can be effectively supported to maximise their potential in all settings and to develop independence and participation. There is regular contact with families to give an overview of progress and areas of changing need.

### 4. How will the curriculum be matched to the child's/young person's needs?

All learners have Individual Learning Plans designed to meet their individual needs so that learners can use their current strengths and interests to develop their independence, pursue their aspirations, ambitions and progress to the future.

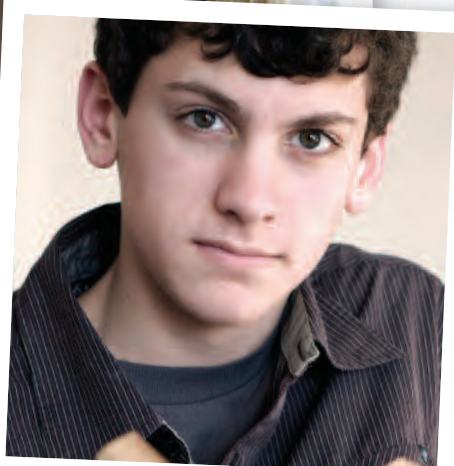
### 5. Do you offer any therapeutic services?

Arden College provides an inclusive communication environment that supports learners with their individualised communication systems. This includes spoken words, signing, symbols and both high tech and low tech AAC systems.

All learners are assessed by the speech and language therapist during their baseline assessment. This underpins the individualised communication support programme that each learner at Arden receives throughout their college life.

### 6. What support will there be for the child's overall well-being?

We are aware that for some of our learners, sensory and experiential learning activities are needed to ensure that learners can become engaged in learning. These programmes are planned well in advance to ensure that the right support and resources are in place for when the learner starts transition into college. For complex learners we offer high levels of support, many of our learners require one to one or higher levels of support.



**7. What specialist services, training and expertise are available at or accessed by the college?**

Our staff undergo training in effective support for learners and specific learning disabilities. The college uses Team Teach Techniques to provide positive de-escalation and intervention to support learners whilst at college.

Learning takes place in a structured environment with a clear strategic focus aimed at making teaching and learning accessible. While some strategies, such as the use of visual resources, are applied throughout the curriculum, others are adapted to meet the specific needs of individual learners. We use the same teaching and learning strategies and resources in our residential homes, and the same educational support staff also work in both environments to ensure a consistent approach

**8. How will children/young people be included in activities outside the classroom and how does the college ensure that children with SEND are able to access leisure and residential activities?**

Learners are encouraged to develop self confidence to build and maintain relationships and friendships. All learners have access to structured and informal leisure activities. These promote independence and problem solving skills within the community. There is also the opportunity for learners to access the community independently of staff but with support given to organise and plan their chosen activity as appropriate.

**9. Does your college offer any outreach?**

Arden uses other training providers across Southport to provide breadth to its curriculum and to ensure students can access learning at the appropriate level.

**10. How accessible is the college environment?**

Arden College is fully accessible and the residential homes have varying levels of accessibility to support a variety of needs. Other areas used for teaching are also accessible including the college run Café in Southport.

**11. Do you have a children's/young person's council?**

The college has a student voice committee that meets regularly to discuss items raised by students in both day and residential provision. The college homes also have weekly meetings to discuss items relevant to students in the residential setting.



## 12. Does the college provide any specialist equipment (e.g Sensory)?

Arden College has a specific emphasis on developing and promoting communication skills. This focus is consistent throughout the college and residential settings. All learners have a communication assessment by a highly experienced speech and language therapist. This assessment leads to a range of outcomes as appropriate for each individual:

- Specific teaching and learning strategies to promote participation and interaction
- Accredited course(s) focusing on communication skills
- A communication profile
- Individual programmes designed by the SLT and carried out, on a block basis, by a speech and language therapy assistant. These programmes can have arrange of aims depending on the need of the individual learner i.e.

*Inclusive communication skills, Signing, Sentence processing abilities, Listening skills, Verbal reasoning skills  
Alternative and augmentative communication skills (both low and high tech)*

## 13. How do you support young people to move onto the next stage of their life?

The aspiration for learners would be to reach their full potential to live and work as independently as possible in the future. Gaining the appropriate skills to achieve this is a pivotal part of the students programme. Although student's access formal taught lessons, it is the parallel, real life learning through living experiences reinforced in the community setting that makes a vital contribution to the progress and achievements of the students.

## 14. Where do young people go when they leave your service?

Young people on leaving Arden progress onto a variety of pathways, including residential, the world of work and Further Education and training. The college ensures through review that each of these pathways is progressed if and when appropriate. The college has demonstrated positive outcomes for its leavers over several years.

### Get in touch

To make the process of referring a young person into Priory Education and Children's Services as seamless as possible or for further information about Arden College, please contact our dedicated enquiries office today on **0845 277 4679**.